

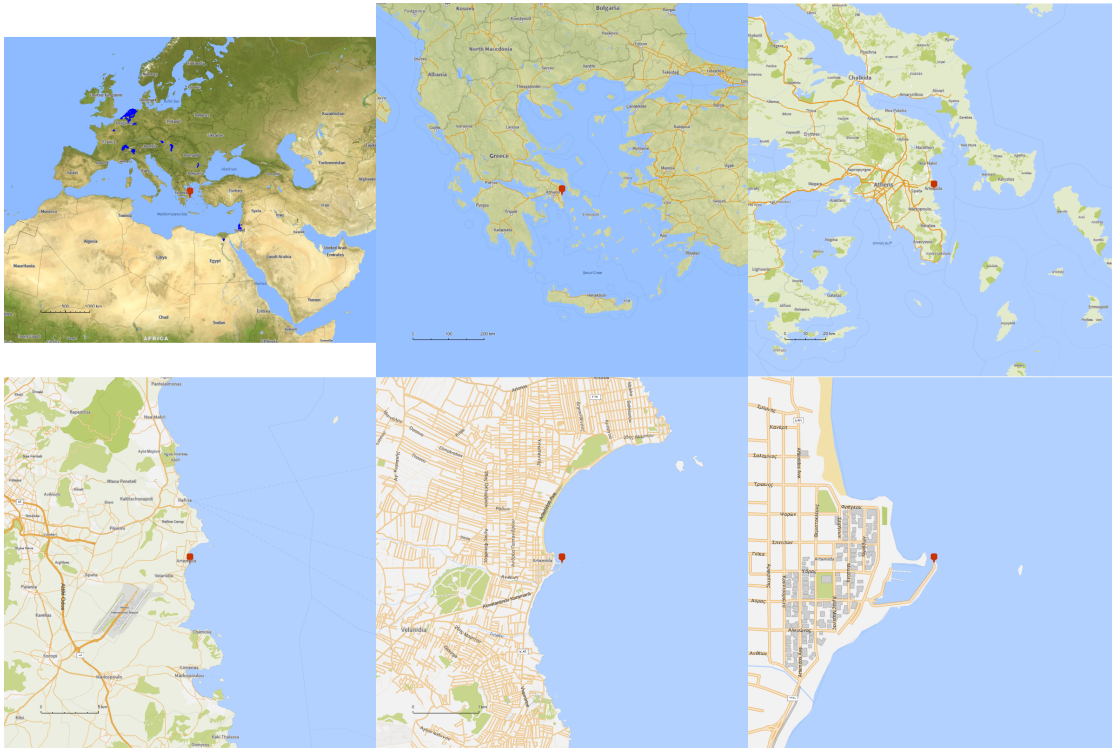
Run

```

In[*]:= $AlbumDirectory = "C:\\drorbn\\Album\\2026.06.10_Morning_in_Artemis";
AllTracks = Get["C:\\drorbn\\Album\\Summaries\\AllTracks.m"];
Location = {37.97415805405908, 24.01248026697535};
LocationMap = Module[{R = 3000, r = 0.5, n = 6, res = 800},
  ImageAssemble[
    Partition[#, 3] &@Table[
      Rasterize[
        GeoGraphics[{GeoMarker[Location], Blue, Thickness[(2 n - k) / 4000], AllTracks},
          GeoCenter -> Location,
          GeoRange -> Quantity[R (r / R)^(k-1)/(n-1), "Kilometers"],
          GeoScaleBar -> "Kilometers",
          ImageSize -> res
        ],
        RasterSize -> res
      ],
      {k, n}],
    "Fit", Background -> White]
  ]
Export[$AlbumDirectory <> "/LocationMap.png", LocationMap]
» C:\drorbn\Album\Summaries
» C:\Users\drorb

```

Out[]=



Out[]=

C:\drorbn\Album\2026.06.10_Morning_in_Artemis/LocationMap.png

Image Directory

```
If[Head[PensieveDirectives] === List,
  ImageComments = "ImageComments" /. PensieveDirectives, ImageComments = {}];
(Interpretation[ImageResize[Import@#, 400], #] → (# /. ImageComments /. (# → ""))) & /@
  FileNames["*.jpg" | "*.jpeg" | "*.png" | "*.mp4", $AlbumDirectory]
```

Export

```
PensieveDirectives = {
  "TitleNotes" → "During a layover in Athens, with Assaf.",
  "ImageComments" → {}
}
```