

```

In[*]:= folder = "C:\\drorbn\\Album\\2025.04.13_Calgary_Ride";
SetDirectory[folder];

nbd = Select[FileNames["*", "C:\\drorbn\\Album"], FileType[#] == Directory &];
len = Length[nbd]
loc = Position[nbd, folder][[1, 1]];
DeleteFile[nbd[[Mod[#, len, 1]] <> "\\index.html"] & /@ (loc + {1, -1})];

fs = Echo@Take[FileNames["*.gpx"], All];
data = Union@Table["Geometry" /. Import[f, "Data"], {f, fs}];
path = Echo@GeoGraphics[{Red, data},
  GeoGridRangePadding -> Scaled[0.1],
  GeoScaleBar -> "Kilometers"
];
Export["Path%.png", path]

path3D = Echo@ResourceFunction["GeoElevationGraphics3D"][{Red, data},
  GeoGridRangePadding -> 0,
  GeoScaleBar -> "Kilometers",
  ViewPoint -> {0.03392552524370772`, -1.9374148986729356`, 2.774035430404068`},
  ViewVertical -> {-0.014353130476599685`, 0.8196768842397942`, 0.5726463071464487`}
];
Export["Path3D.png", path3D]

PathLocation = Module[{R = 3000, r = 40, n = 6, res = 600},
  ImageAssemble[
    Partition[#, 3] &@Table[
      Rasterize[
        GeoGraphics[{Red, Thickness[(2 n - k) / 1000], data},
          GeoCenter -> Mean@Cases[data, GeoPosition[L_List] :> Mean[L], ∞],
          GeoRange -> Quantity[R (r / R)^(k-1) / (n-1), "Kilometers"],
          GeoScaleBar -> "Kilometers",
          ImageSize -> res
        ],
        RasterSize -> res
      ],
      {k, n}],
    "Fit", Background -> White]
  ]
Export["PathLocation.png", PathLocation]

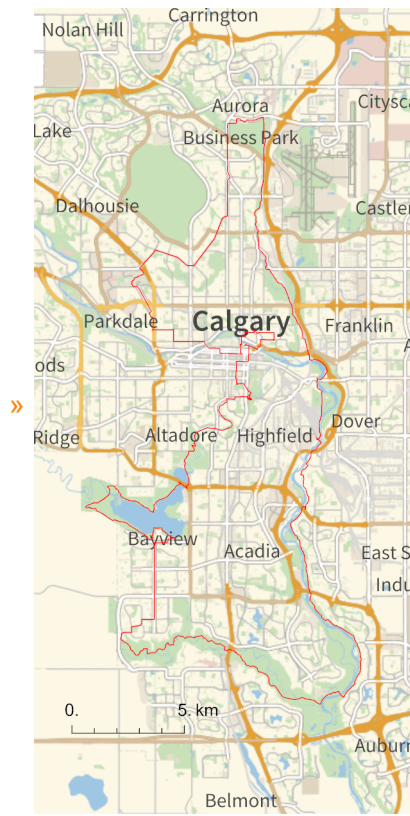
ResetDirectory[]

```

Out[*]=

353

» {2025-04-13_2160215787_Calgary Ride.gpx}



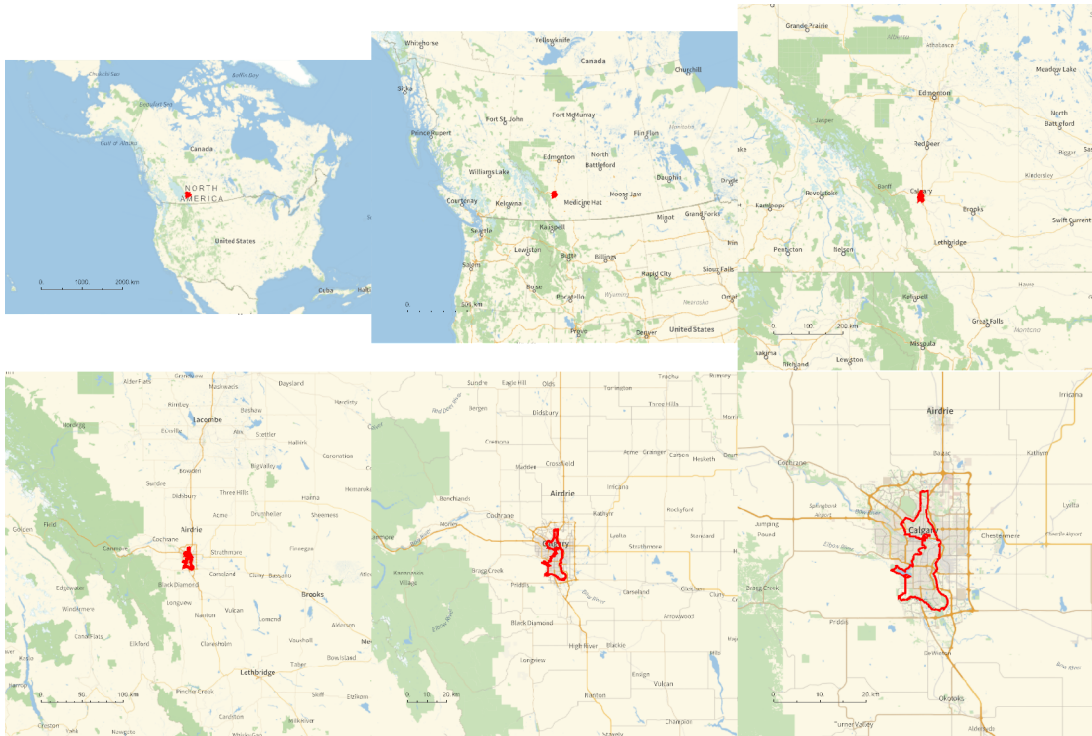
Out[]=

Path%.png



Out[]=

Path3D.png

Out[$\#$]=Out[$\#$]=

PathLocation.png

Out[$\#$]=

C:\Users\drorb

```

folder = "C:\\drorbn\\Album\\2025.04.13_Calgary_Ride";
SetDirectory[folder];
If[Head[PensieveDirectives] === List,
  ImageComments = "ImageComments" /. PensieveDirectives, ImageComments = {}];
(Interpretation[ImageResize[Import@#, 400], #] → (# /. ImageComments /. (# → ""))) & /@
  FileNames["*.jpg" | "*.jpeg" | "*.png" | "*.mp4"]

```

102km with 610m of climbs, the day before a [conference in Banff](http://drorbn.net/ba25). Was great, except I had two flat tires! The first I fixed on the spot, using my spare inner tube. Like a good boy before installing the new inner tube I checked carefully to see that whatever sharpie was responsible for the puncture was no longer there. But then I had a second flat in the same tire, and I no longer had a spare inner tube. So I made a few phone calls and found a [lovely bike shop](http://www.gobikeandbrew.ca) a few kilometers away that had the right-sized inner tubes and was willing to install them right away, on a Sunday. The guy there looked much harder than me, and eventually found the culprit - a tiny shard of glass that got embedded in the tire and was barely visible from both the outside and the inside.

The first picture is from the day before at the Calgary Airport.

```
{  
  "TitleNotes" → "102km with 610m of climbs, the day before a <a  
    href=http://drorbn.net/ba25>conference in Banff</a>. Was great, except I had  
    two flat tires! The first I fixed on the spot, using my spare inner tube.  
    Like a good boy before installing the new inner tube I checked carefully to  
    see that whatever sharpie was responsible for the puncture was no longer  
    there. But then I had a second flat in the same tire, and I no longer had a  
    spare inner tube. So I made a few phone calls and found a <a class=external  
    href=https://www.gobikeandbrew.ca/>lovely bike shop</a> a few kilometers  
    away that had the right-sized inner tubes and was willing to install them  
    right away, on a Sunday. The guy there looked much harder than me, and  
    eventually found the culprit - a tiny shard of glass that got embedded  
    in the tire and was barely visible from both the outside and the inside.  
<p>The first picture is from the day before at the Calgary Airport.",  
  "ImageComments" → {}  
}
```