

```

In[*]:= folder = "C:\\drorbn\\Album\\2025.02.09_Cross_Country_Skiing_at_Albian_Hills";
SetDirectory[folder];

nbd = Select[FileNames["*", "C:\\drorbn\\Album"], FileType[#] == Directory &];
len = Length[nbd]
loc = Position[nbd, folder][[1, 1]];
DeleteFile[nbd[[Mod[#, len, 1]] <> "\\index.html"] & /@ (loc + {1, -1})];

fs = Echo@Take[FileNames["*.gpx"], All];
data = Union@Table["Geometry" /. Import[f, "Data"], {f, fs}];
path = Echo@GeoGraphics[{Red, data},
  GeoGridRangePadding -> Scaled[0.1],
  GeoScaleBar -> "Kilometers"
];
Export["Path%.png", path]

path3D = Echo@ResourceFunction["GeoElevationGraphics3D"][{Red, data},
  GeoGridRangePadding -> 0,
  GeoScaleBar -> "Kilometers",
  ViewPoint -> {0.03392552524370772`, -1.9374148986729356`, 2.774035430404068`},
  ViewVertical -> {-0.014353130476599685`, 0.8196768842397942`, 0.5726463071464487`}
];
Export["Path3D.png", path3D]

PathLocation = Module[{R = 3000, r = 8, n = 6, res = 600},
  ImageAssemble[
    Partition[#, 3] &@Table[
      Rasterize[
        GeoGraphics[{Red, Thick, data},
          GeoCenter -> Mean@Cases[data, GeoPosition[L_List] :-> Mean[L], ∞],
          GeoRange -> Quantity[R (r/R)^(k-1)/(n-1), "Kilometers"],
          GeoScaleBar -> "Kilometers",
          ImageSize -> res
        ],
        RasterSize -> res
      ],
      {k, n}],
    "Fit", Background -> White]
  ]
Export["PathLocation.png", PathLocation]

ResetDirectory[]

```

Out[*]=

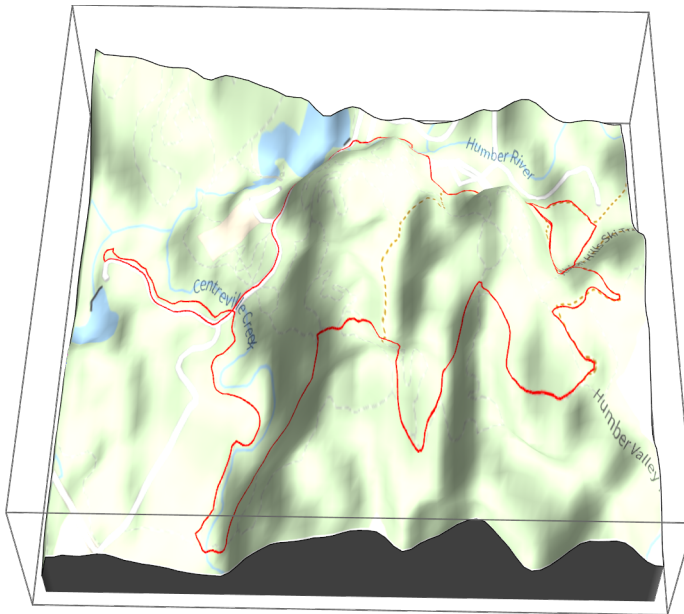
343

» {2025-02-09_2049460355_2025.02.09_Cross_Country_Skiing_at_Albian_Hills.gpx}



Out[]=

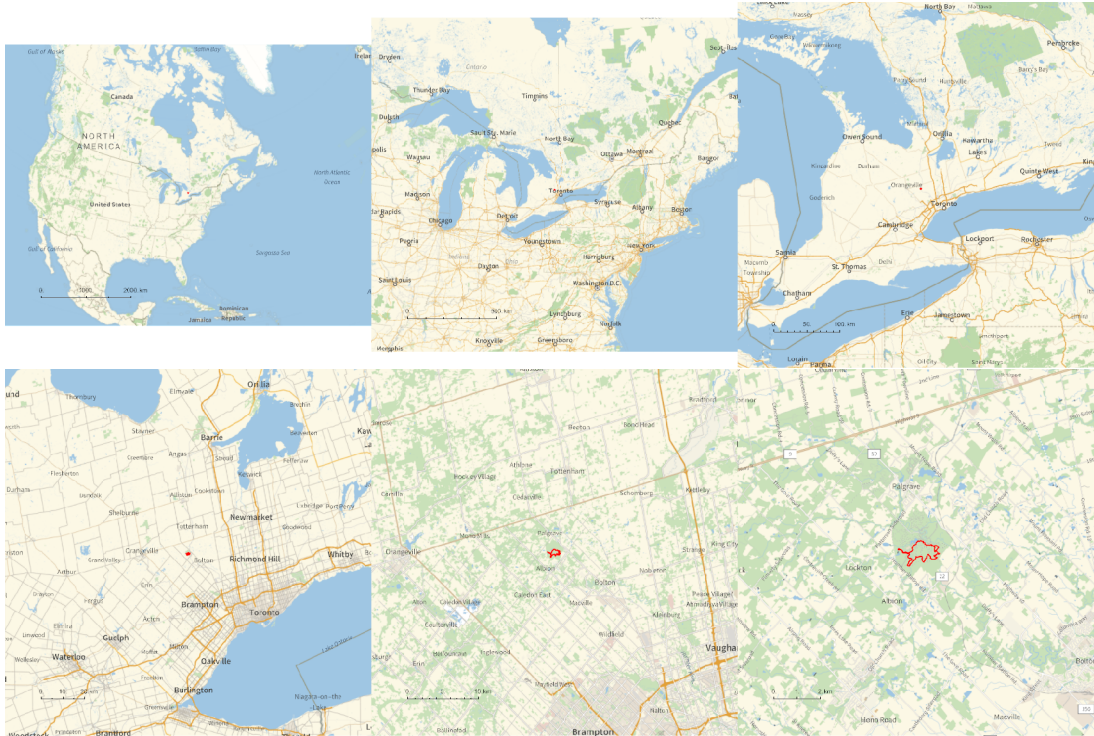
Path%.png



Out[]=

Path3D.png

Out[]=



Out[]=

PathLocation.png

Out[]=

C:\drorbn\Album\Summaries

```

folder = "C:\\drorbn\\Album\\2025.01.18_Urban_Walk_Bloor_West";
SetDirectory [folder];
If[Head[PensieveDirectives] === List,
  ImageComments = "ImageComments" /. PensieveDirectives, ImageComments = {}];
(Interpretation[ImageResize[Import@#, 400], #] → (# /. ImageComments /. (# → ""))) & /@
FileNames ["*.jpg" | "*.jpeg" | "*.png" | "*.mp4"]
    
```

I decided to check if I want to add cross country skiing to my activities, so I went with Olga to a very easy organized place, to remind myself what it was like . It was hard! Completely different motions and muscles, and the snow was particularly sticky . We only skied about 6.1km, plus we walked for about 1.4km to shortcut the rest of the trail - it was too hard!

< p > So will I do it routinely? I'm not sure . I'll have to try a bit more first .

< p > On the way back we stopped at the < a class = external href = <https://www.baps.org/Global-Network/North-America/Toronto.aspx> > BAPS Shri Swaminarayan Mandir < /a > . Always an amazing place .

```
{
  "TitleNotes" →
    "I decided to check if I want to add cross country skiing to my activities, so I
    went with Olga to a very easy organized place, to remind myself what it
    was like. It was hard! Completely different motions and muscles, and the
    snow was particularly sticky. We only skied about 6.1km, plus we walked
    for about 1.4km to shortcut the rest of the trail - it was too hard!
    <p>So will I do it routinely? I'm not sure. I'll have to try a bit more first.
    <p>On the way back we stopped at the <a class=external
      href=https://www.baps.org/Global-Network/North-America/Toronto.aspx>BAPS
      Shri Swaminarayan Mandir</a>. Always an amazing place.",
  "ImageComments" → {}
}
```