

```

In[*]:= folder = "C:\\drorbn\\Album\\2024.12.08_Short_Ride_in_Washington_DC";
SetDirectory[folder];

nbd = Select[FileNames["*", "C:\\drorbn\\Album"], FileType[#] == Directory &];
len = Length[nbd]
loc = Position[nbd, folder][[1, 1]];
DeleteFile[nbd[[Mod[#, len, 1]] <> "\\index.html"] & /@ (loc + {1, -1})];

fs = Echo@Take[FileNames["*.gpx"], All];
data = Union@Table["Geometry" /. Import[f, "Data"], {f, fs}];
path = Echo@GeoGraphics[{Red, data},
  GeoGridRangePadding -> Scaled[0.1],
  GeoScaleBar -> "Kilometers"
];
Export["Path%.png", path]

path3D = Echo@ResourceFunction["GeoElevationGraphics3D"][{Red, data},
  GeoGridRangePadding -> 0,
  GeoScaleBar -> "Kilometers",
  ViewPoint -> {0.03392552524370772`, -1.9374148986729356`, 2.774035430404068`},
  ViewVertical -> {-0.014353130476599685`, 0.8196768842397942`, 0.5726463071464487`}
];
Export["Path3D.png", path3D]

PathLocation = Module[{R = 3000, r = 30, n = 6, res = 600},
  ImageAssemble[
    Partition[#, 3] &@Table[
      Rasterize[
        GeoGraphics[{Red, Thick, data},
          GeoCenter -> Mean@Cases[data, GeoPosition[L_List] :-> Mean[L], ∞],
          GeoRange -> Quantity[R (r/R)^(k-1)/(n-1), "Kilometers"],
          GeoScaleBar -> "Kilometers",
          ImageSize -> res
        ],
        RasterSize -> res
      ],
      {k, n}],
    "Fit", Background -> White]
  ]
Export["PathLocation.png", PathLocation]

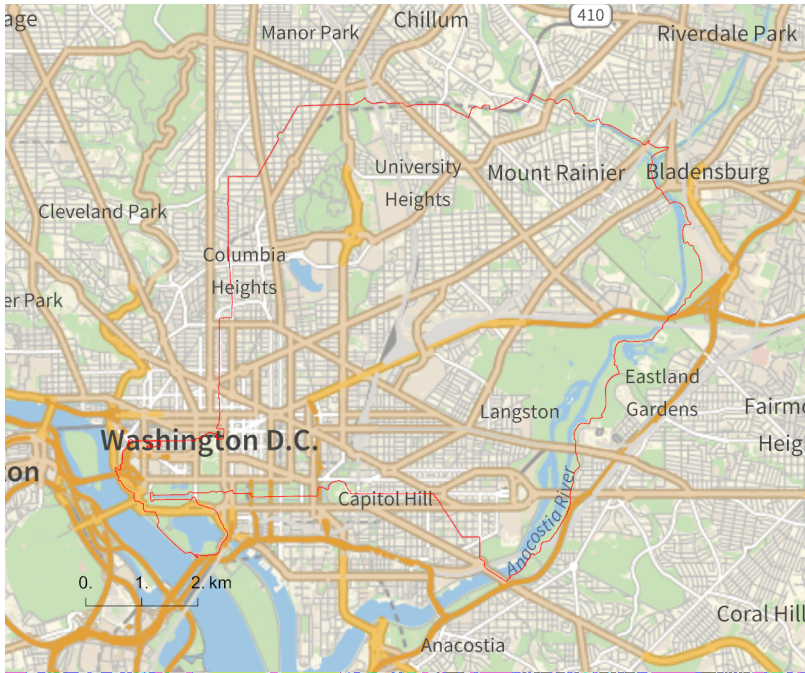
ResetDirectory[]

```

Out[*]=

334

» {2024-12-08_1978705732_Short_Ride_in_Washington_DC.gpx}



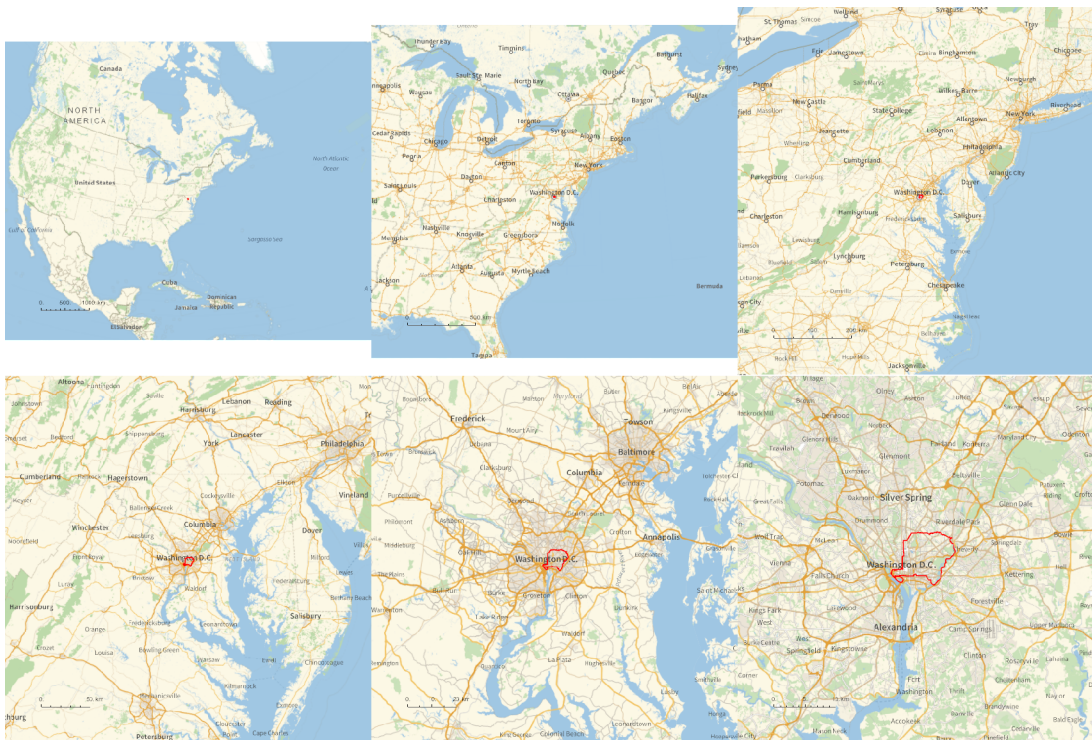
Out[*]=

Path%.png

Out[*]=

Path3D.png

Out[*]=



Out[]=

PathLocation.png

Out[]=

C:\Users\drorb

folder =`"C:\\drorbn\\Album\\2024.12.04_Short_Hike_in_the_Lynn_Headwaters_Regional_Park";`**SetDirectory [folder];**`(Interpretation[ImageResize[Import@#, 400], #] → "") & /@``FileNames["*.jpg" | "*.jpeg" | "*.png" | "*.mp4"]`

A 42.7km ride on a [Capital Bikeshare](https://capitalbikeshare.com/) bike, following a [talk](https://www.math.utoronto.ca/~drorbn/Talks/GWU-2412/index.html) at George Washington University and followed by a flight back to Toronto. The first two pictures are from the GWU campus, a couple of days earlier.

```
{
  "TitleNotes" →
  "A 42.7km ride on a Capital
  Bikeshare bike, following a talk
  at George Washington University and followed by a flight back to Toronto.
  The first two pictures are from the GWU campus, a couple of days earlier.",
  "ImageComments" → {}
}
```