

```

folder = "C:\\drorbn\\Album\\2024.07.13_Bruce_Hike_34-_The_Blue_Mountains";
SetDirectory[folder];

nbd = Select[FileNames["*", "C:\\drorbn\\Album"], FileType[#] == Directory &];
len = Length[nbd]
loc = Position[nbd, folder][[1, 1]];
DeleteFile[nbd[[Mod[#, len, 1]] <> "\\index.html"] & /@ (loc + {1, -1});

fs = Echo@Take[FileNames["*.gpx"], All];
data = Union@Table["Geometry" /. Import[f, "Data"], {f, fs]];
path = Echo@GeoGraphics[{Red, data},
  GeoGridRangePadding → Scaled[0.1],
  GeoScaleBar → "Kilometers"
];
Export["Path%.png", path]

path3D = Echo@ResourceFunction["GeoElevationGraphics3D"][{Red, data},
  GeoGridRangePadding → 0,
  GeoScaleBar → "Kilometers"
];
Export["Path3D%.png", path3D]

PathLocation = Module[{R = 3000, r = 15, n = 6, res = 600},
  ImageAssemble[
    Partition[#, 3] &@Table[
      Rasterize[
        GeoGraphics[{Red, Thick, data},
          GeoCenter → Mean@Cases[data, GeoPosition[L_List] := Mean[L], ∞],
          GeoRange → Quantity[R (r / R)(k-1) / (n-1), "Kilometers"],
          GeoScaleBar → "Kilometers",
          ImageSize → res
        ],
        RasterSize → res
      ],
      {k, n}],
    "Fit", Background → White]
  ]
Export["PathLocation.png", PathLocation]

ResetDirectory[]

```

Out[\*]=

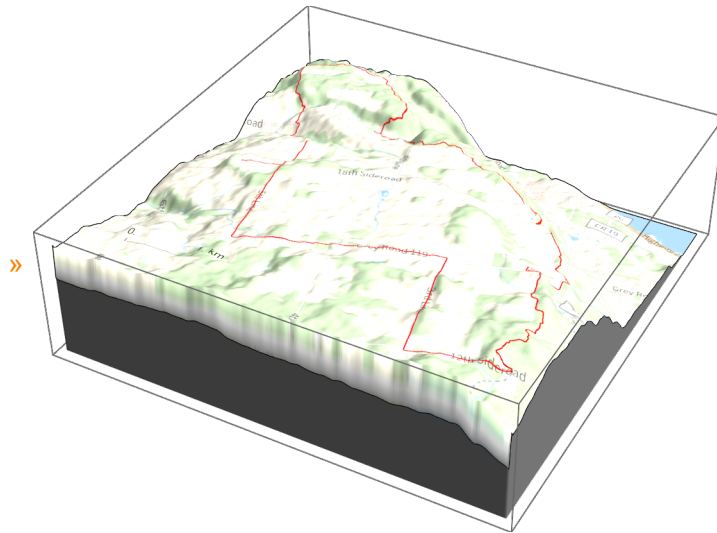
303

» {2024-07-13\_1706608060\_2024.07.13\_Bruce\_Hike\_34-\_The\_Blue\_Mountains.gpx}



Out[ ]=

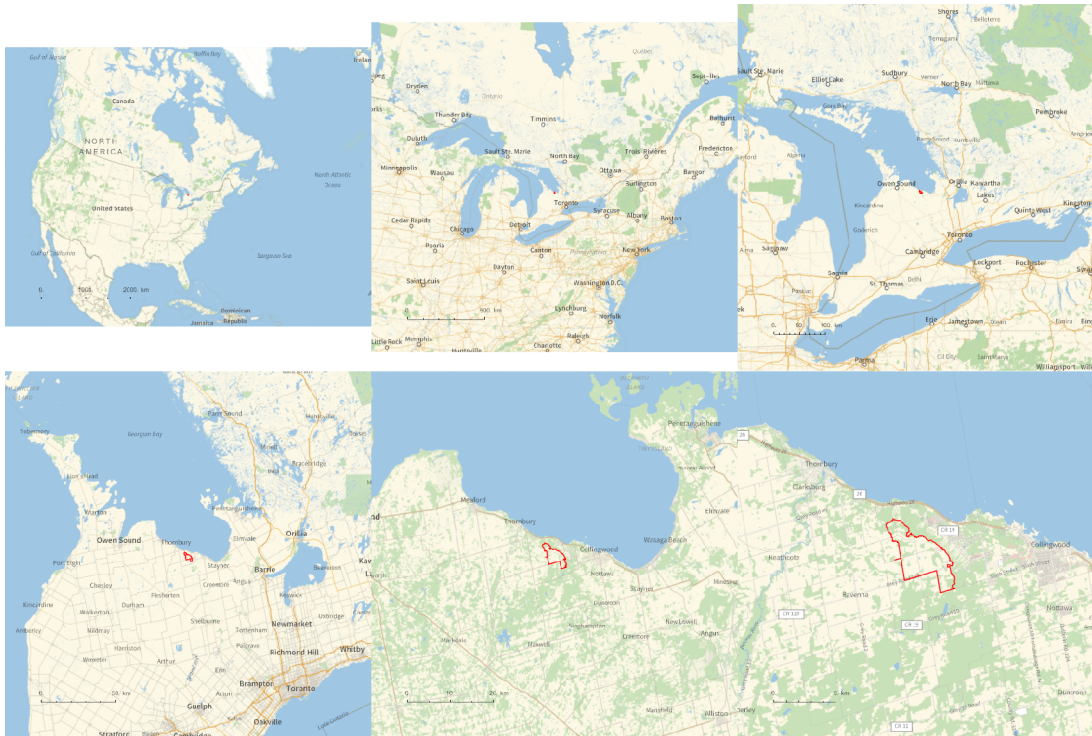
Path%.png



Out[ ]=

Path3D%.png

Out[ ]=



Out[ ]=

PathLocation.png

Out[ ]=

C:\drorbn\Album\Summaries

```

folder = "C:\\drorbn\\Album\\2024.07.13_Bruce_Hike_34-_The_Blue_Mountains";
SetDirectory[folder];
(Interpretation[ImageResize[Import@#, 400], #] → "") & /@
FileNames["*.jpg" | "*.jpeg" | "*.png" | "*.mp4"]

```

```

{
  "TitleNotes" → "With Yusuke, 17km hiking plus 8.2km biking back.",
  "ImageComments" → {}
}

```