

```

In[*]:= folder = "C:\\drorbn\\Album\\2024.04.13_Coyoacan_to_Ajusco";
SetDirectory[folder];

nbd = Select[FileNames["*", "C:\\drorbn\\Album"], FileType[#] == Directory &];
len = Length[nbd]
loc = Position[nbd, folder][[1, 1]];
DeleteFile[nbd[[Mod[#, len, 1]] <> "\\index.html"] & /@ (loc + {1, -1})];

fs = Echo@Take[FileNames["*.gpx"], All];
data = Union@Table["Geometry" /. Import[f, "Data"], {f, fs}];
path = Echo@GeoGraphics[{Red, data},
  GeoGridRangePadding -> Scaled[0.1],
  GeoScaleBar -> "Kilometers"
];
Export["Path%.png", path]

path3D = Echo@ResourceFunction["GeoElevationGraphics3D"][{Red, data},
  GeoGridRangePadding -> 0,
  GeoScaleBar -> "Kilometers"
];
Export["Path3D%.png", path3D]

PathLocation = Module[{R = 3000, r = 40, n = 6, res = 600},
  ImageAssemble[
    Partition[#, 3] &@Table[
      Rasterize[
        GeoGraphics[{Red, Thick, data},
          GeoCenter -> Mean@Cases[data, GeoPosition[l_List] :> Mean[l], ∞],
          GeoRange -> Quantity[R (r / R)^(k-1)/(n-1), "Kilometers"],
          GeoScaleBar -> "Kilometers",
          ImageSize -> res
        ],
      RasterSize -> res
    ],
    {k, n}],
  "Fit", Background -> White]
]
Export["PathLocation.png", PathLocation]

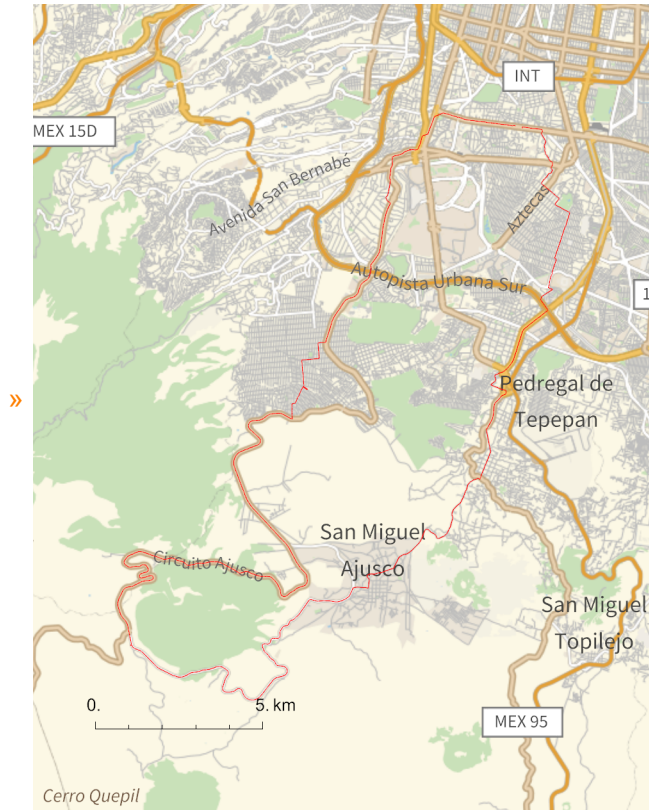
ResetDirectory[]

```

Out[*]=

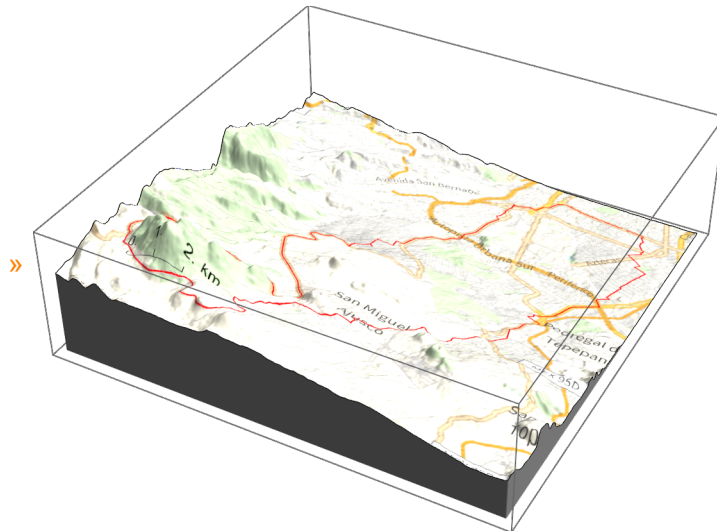
288

» {2024-04-13_1512732165_2024.04.13_Coyoacan_to_Ajusco.gpx}



Out[]=

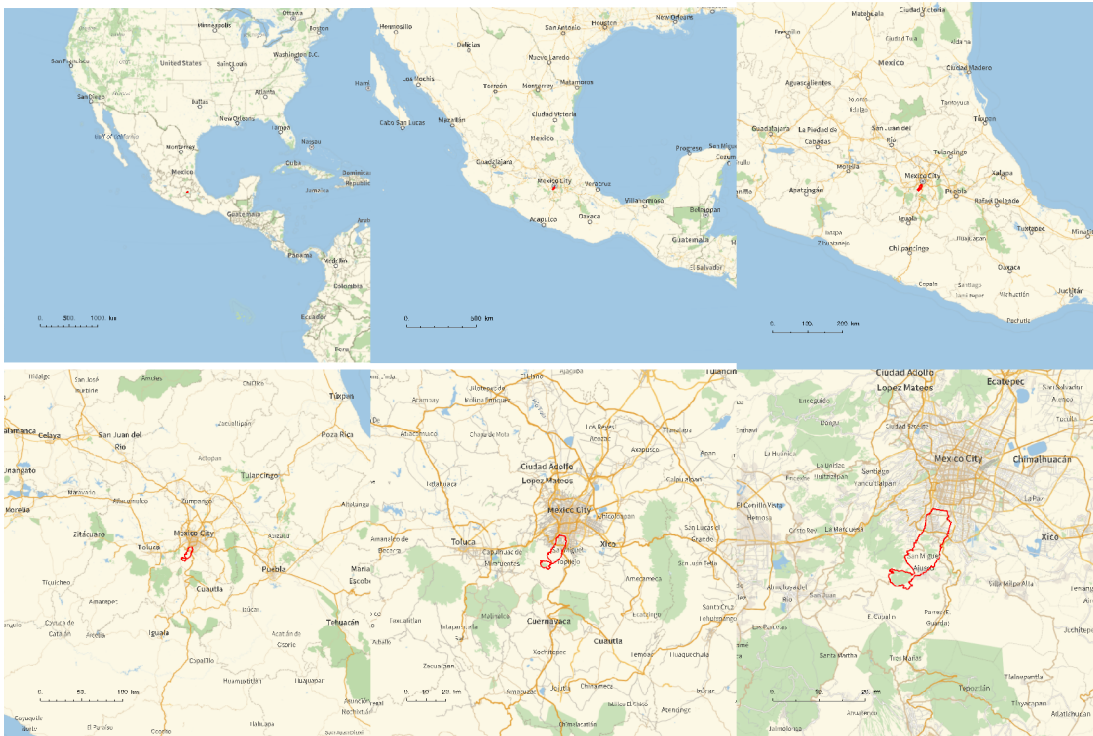
Path%.png



Out[]=

Path3D%.png

Out[]=



Out[]=

PathLocation.png

Out[]=

C:\Users\drorb\OneDrive\Documents

```

folder = "C:\\drorbn\\Album\\2024.03.24_Boston_Seashore_-_North";
SetDirectory [ folder ];
(Interpretation [ImageResize [Import@#, 400], #] → "") & /@
FileNames ["*.jpg" | "*.jpeg" | "*.png" | "*.mp4"]
    
```

Just 64.5km, but climbing from 2230m to 3450m, just a day after I came from sea level. Towards the top I was breathing so hard yet moving so slow!

```

{
  "TitleNotes" →
  "Just 64.5km, but climbing from 2230m to 3450m, just a day after I came from sea
  level. Towards the top I was breathing so hard yet moving so slow!",
  "ImageComments" → {}
}
    
```