

```

In[*]:= folder = "C:\\drorbn\\Album\\2024.03.16_Lindsay_Sunderland_Cannington_Woodville_Loop";
SetDirectory[folder];

nbd = Select[FileNames["*", "C:\\drorbn\\Album"], FileType[#] == Directory &];
len = Length[nbd]
loc = Position[nbd, folder][[1, 1]];
DeleteFile[nbd[[Mod[#, len, 1]] <> "\\index.html"] & /@ (loc + {1, -1})];

fs = Echo@Take[FileNames["*.gpx"], All];
data = Union@Table["Geometry" /. Import[f, "Data"], {f, fs}];
path = Echo@GeoGraphics[{Red, data},
  GeoGridRangePadding -> Scaled[0.1],
  GeoScaleBar -> "Kilometers"
];
Export["Path%.png", path]

path3D = Echo@ResourceFunction["GeoElevationGraphics3D"][{Red, data},
  GeoGridRangePadding -> 0,
  GeoScaleBar -> "Kilometers"
];
Export["Path3D%.png", path3D]

PathLocation = Module[{R = 3000, r = 40, n = 6, res = 600},
  ImageAssemble[
    Partition[#, 3] &@Table[
      Rasterize[
        GeoGraphics[{Red, Thick, data},
          GeoCenter -> Mean@Cases[data, GeoPosition[l_List] :> Mean[l], ∞],
          GeoRange -> Quantity[R (r / R)(k-1)/(n-1), "Kilometers"],
          GeoScaleBar -> "Kilometers",
          ImageSize -> res
        ],
        RasterSize -> res
      ],
      {k, n}],
    "Fit", Background -> White]
  ]
Export["PathLocation.png", PathLocation]

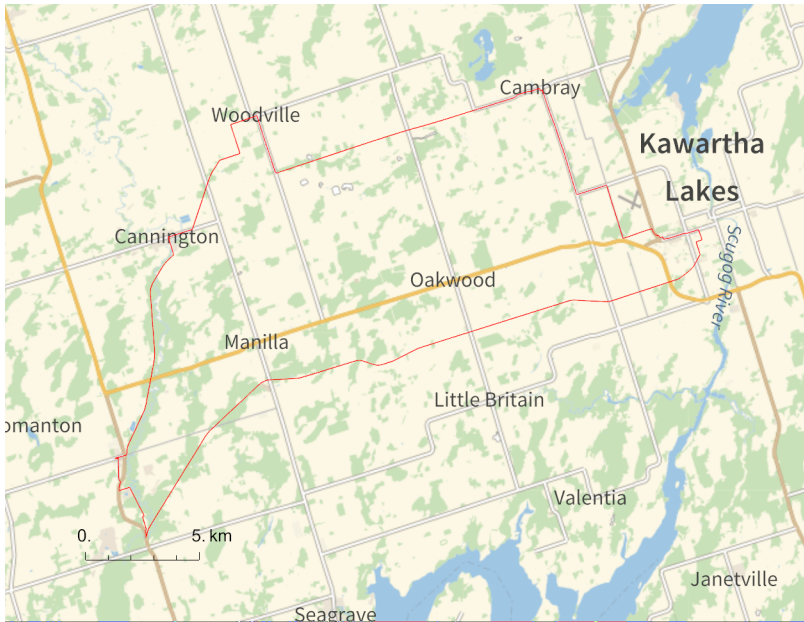
ResetDirectory[]

```

Out[*]=

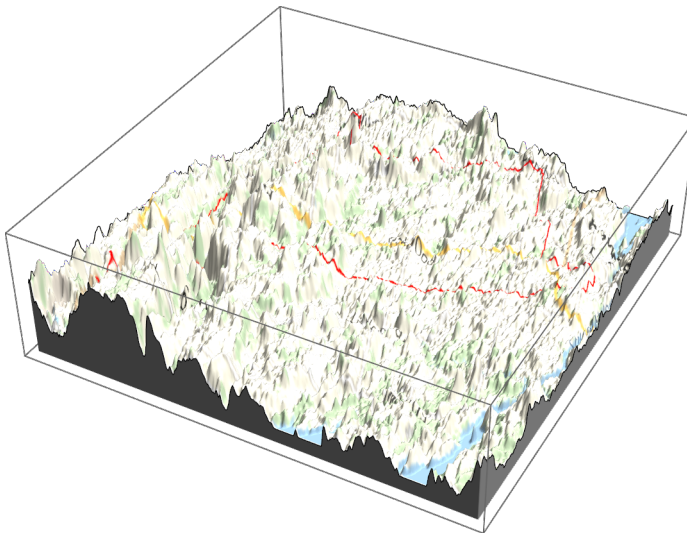
279

» {2024-03-16_08-25_Sat.gpx,
2024-03-16_1472277236_2024.03.16_Lindsay_Sunderland_Cannington_Woodville_Loop.gpx}



Out[]=

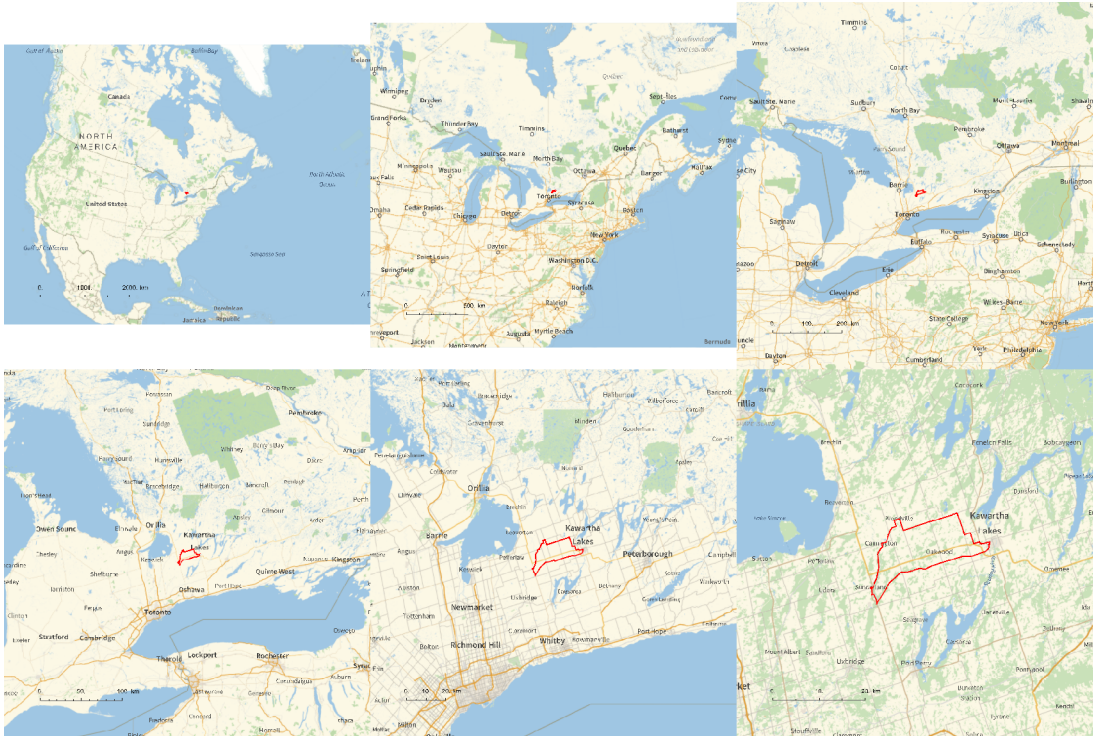
Path%.png



Out[]=

Path3D%.png

Out[]=



Out[]=

PathLocation.png

Out[]=

C:\Users\drorb\OneDrive\Documents

```

folder = "C:\\drorb\\Album\\2024.03.16_Lindsay_Sunderland_Cannington_Woodville_Loop";
SetDirectory[folder];
(Interpretation[ImageResize[Import@#, 400], #] → "") & /@
FileNames["*.jpg" | "*.jpeg" | "*.png" | "*.mp4"]

```

82 km on a gray day. The first picture is from the day before in Lindsay.

```

{
  "TitleNotes" →
    "82 km on a gray day. The first picture is from the day before in Lindsay.",
  "ImageComments" → {}
}

```