

```

folder = "C:\\drorbn\\Album\\2024.03.02_Bruce_Hike_33-_Pretty_River_Valley";
SetDirectory[folder];

nbd = Select[FileNames["*", "C:\\drorbn\\Album"], FileType[#] == Directory &];
len = Length[nbd]
loc = Position[nbd, folder][[1, 1]];
DeleteFile[nbd[[Mod[#, len, 1]] <> "\\index.html"] & /@ (loc + {1, -1})];

fs = Echo@Take[FileNames[{"*.gpx", "*.kml"}], All];
data = Union@Table["Geometry" /. Import[f, "Data"], {f, fs}];
path = Echo@GeoGraphics[{Red, data},
  GeoGridRangePadding -> Scaled[0.1],
  GeoScaleBar -> "Kilometers"
];
Export["Path%.png", path]

path3D = Echo@ResourceFunction["GeoElevationGraphics3D"][{Red, data},
  GeoGridRangePadding -> 0,
  GeoScaleBar -> "Kilometers"
];
Export["Path3D%.png", path3D]

PathLocation = Module[{R = 3000, r = 15, n = 6, res = 600},
  ImageAssemble[
    Partition[#, 3] &@Table[
      Rasterize[
        GeoGraphics[{Red, Thick, data},
          GeoCenter -> Mean@Cases[data, GeoPosition[l_List] :> Mean[l], ∞],
          GeoRange -> Quantity[R (r / R)^(k-1)/(n-1), "Kilometers"],
          GeoScaleBar -> "Kilometers",
          ImageSize -> res
        ],
        RasterSize -> res
      ],
      {k, n}],
    "Fit", Background -> White]
  ]
Export["PathLocation.png", PathLocation]

ResetDirectory[]

```

Out[*]=

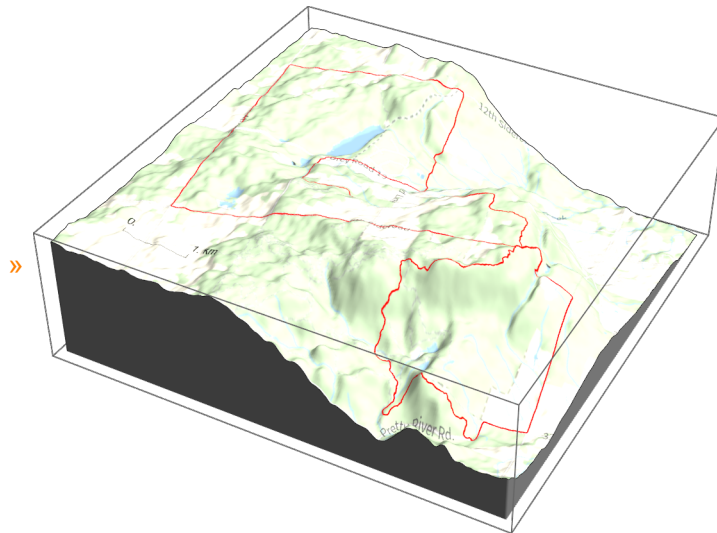
277

» {2024-03-02_1456743066_2024.03.02_Bruce_Hike_33-_Pretty_River_Valley.gpx}



Out[]=

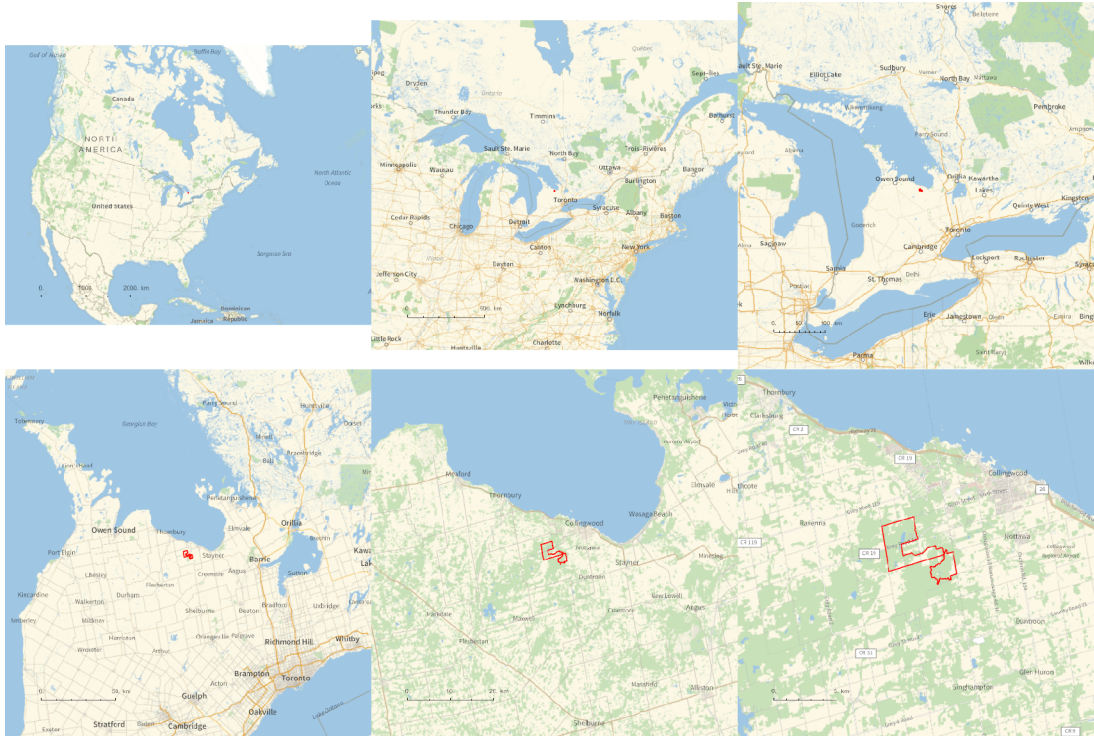
Path%.png



Out[]=

Path3D%.png

Out[]=



Out[]=

PathLocation.png

Out[]=

C:\drorbn\Album\Summaries

```

folder = "C:\\drorbn\\Album\\2024.03.02_Bruce_Hike_33-_Pretty_River_Valley";
SetDirectory[folder];
(Interpretation[ImageResize[Import@#, 400], #] → "") & /@
FileNames["*.jpg" | "*.jpeg" | "*.png" | "*.mp4"]
    
```

The day was at the triple point of winter, where ice, snow, and mud happily co-exist. Happy for them, that is. But challenges are great, so it was a great day! About 16km hiking and 14km biking back. Part of the ride back was on an unmaintained road, with lots of ice and snow and mud and big paddles of water - so this was my winter bike's first real test. I made it through! No chance I could have done it with my other bikes.

```
{
  "TitleNotes" →
  "The day was at the triple point of winter, where ice, snow, and mud happily
  co-exist. Happy for them, that is. But challenges are great, so it was
  a great day! About 16km hiking and 14km biking back. Part of the ride
  back was on an unmaintained road, with lots of ice and snow and mud and
  big paddles of water - so this was my winter bike's first real test. I
  made it through! No chance I could have done it with my other bikes.",
  "ImageComments" → {}
}
```