

```

In[*]:= folder =
  "C:\\drorbn\\Album\\2024.02.17_Bruce_Hike_32-_Nottawasaga_Lookout_and_Pretty_River";
SetDirectory[folder];

nbd = Select[FileNames["*", "C:\\drorbn\\Album"], FileType[#] == Directory &];
len = Length[nbd]
loc = Position[nbd, folder][[1, 1]];
DeleteFile[nbd[[Mod[#, len, 1]] <> "\\index.html"] & /@ (loc + {1, -1})];

fs = Echo@Take[FileNames["*.gpx"], All];
data = Union@Table["Geometry" /. Import[f, "Data"], {f, fs}];
path = Echo@GeoGraphics[{Red, data},
  GeoGridRangePadding -> Scaled[0.1],
  GeoScaleBar -> "Kilometers"
];
Export["Path%.png", path]

path3D = Echo@ResourceFunction["GeoElevationGraphics3D"][{Red, data},
  GeoGridRangePadding -> 0,
  GeoScaleBar -> "Kilometers"
];
Export["Path3D%.png", path3D]

PathLocation = Module[{R = 3000, r = 15, n = 6, res = 600},
  ImageAssemble[
    Partition[#, 3] &@Table[
      Rasterize[
        GeoGraphics[{Red, Thick, data},
          GeoCenter -> Mean@Cases[data, GeoPosition[l_List] :> Mean[l], ∞],
          GeoRange -> Quantity[R (r / R)(k-1)/(n-1), "Kilometers"],
          GeoScaleBar -> "Kilometers",
          ImageSize -> res
        ],
      RasterSize -> res
    ],
    {k, n}],
  "Fit", Background -> White]
]
Export["PathLocation.png", PathLocation]

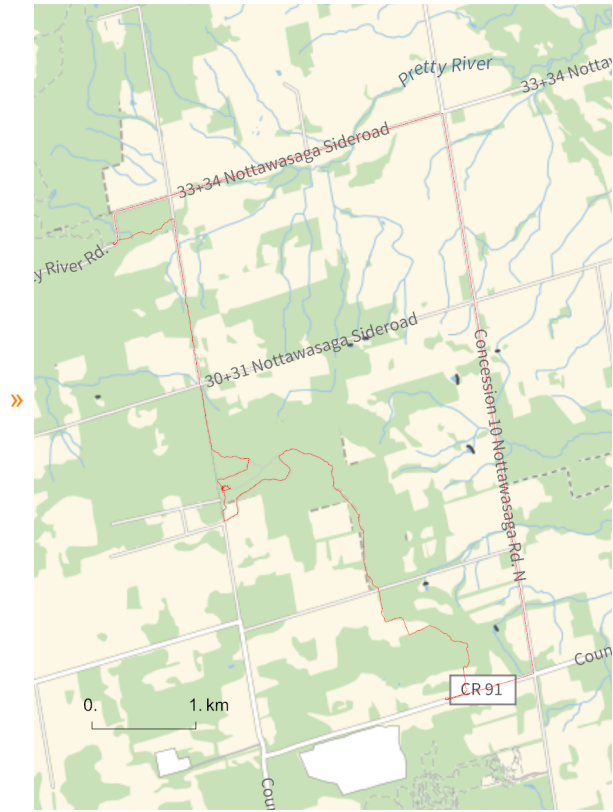
ResetDirectory[]

```

Out[*]=

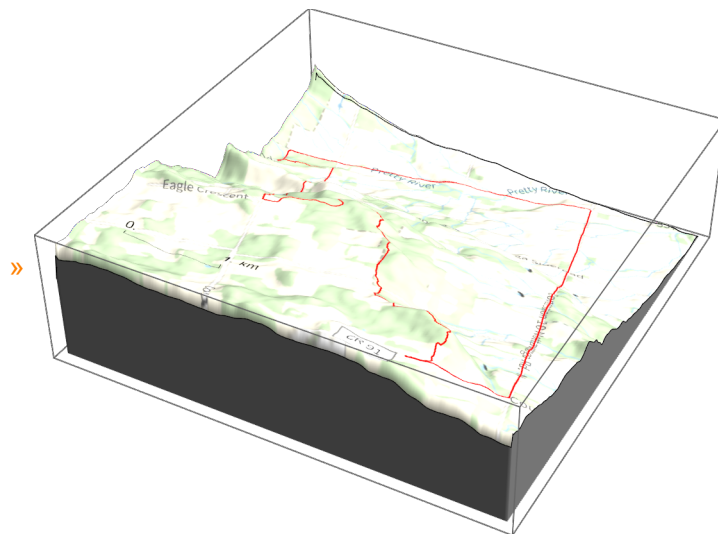
274

» {2024-02-17_11-01_Sat.gpx}



Out[]=

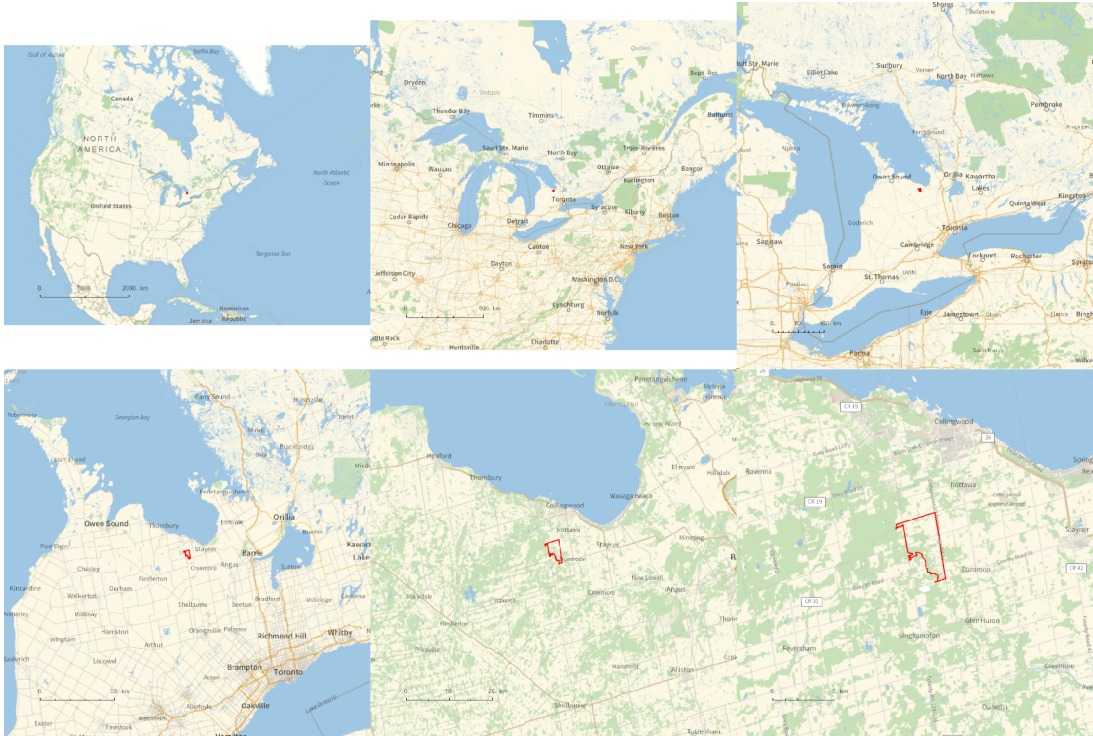
Path%.png



Out[]=

Path3D%.png

Out[]=



Out[]=

PathLocation.png

Out[]=

C:\drorbn\Album\Summaries

folder =

```
"C:\\drorbn\\Album\\2024.02.17_Bruce_Hike_32-_Nottawasaga_Lookout_and_Pretty_River";
```

```
SetDirectory [ folder ] ;
```

```
(Interpretation [ ImageResize [ Import @ # , 400 ] , # ] → "" ) & /@
```

```
FileNames [ "*.jpg" | "*.jpeg" | "*.png" | "*.mp4" ]
```

With [Roland](https://www.rolandvdv.nl/). Only 10km on the Bruce Trail, and another 10km return by bike. But at 10 below zero, and with the deepest snow I've had on the Bruce so far.

```
{  
  "TitleNotes" →  
  "With Roland. Only  
  10km on the Bruce Trail, and another 10km return by bike. But at 10  
  below zero, and with the deepest snow I've had on the Bruce so far.",  
  "ImageComments" → {}  
}
```