

```
In[*]:= Length[DeleteFile /@ FileNames["index.html", "C:\\drorbn\\AcademicPensieve\\Album", 2]]
```

```
Out[*]=
```

```
212
```

```
In[*]:= folder =
```

```
"C:\\drorbn\\AcademicPensieve\\Album\\2023.04.22_Rouge_River_Park_from_Steeles_to_the_Lake";
```

```
SetDirectory[folder];
```

```
fs = Echo@FileNames["*.gpx"];
```

```
data = Union@Table["Geometry" /. Import[f, "Data"], {f, fs}];
```

```
path = Echo@GeoGraphics[{Red, data},
```

```
GeoGridRangePadding → 0,
```

```
GeoScaleBar → "Kilometers"
```

```
];
```

```
(*Export["path.png", path] *)
```

```
PathLocation = Module[{R = 3000, r = 8, n = 6, res = 600},
```

```
ImageAssemble[
```

```
Partition[#, 3] &@Table[
```

```
Rasterize[
```

```
GeoGraphics[{Red, Thick, data},
```

```
GeoCenter → Mean@Cases[data, GeoPosition[L_List] :> Mean[L], ∞],
```

```
GeoRange → Quantity[R (r / R)(k-1)/(n-1), "Kilometers"],
```

```
GeoScaleBar → "Kilometers",
```

```
ImageSize → res
```

```
],
```

```
RasterSize → res
```

```
],
```

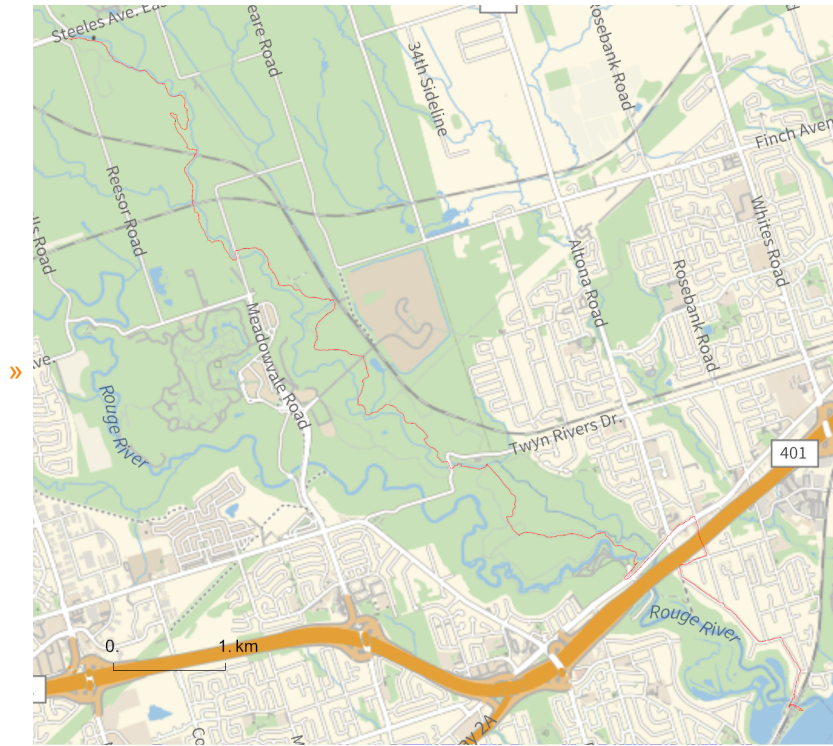
```
{k, n}],
```

```
"Fit", Background → White]
```

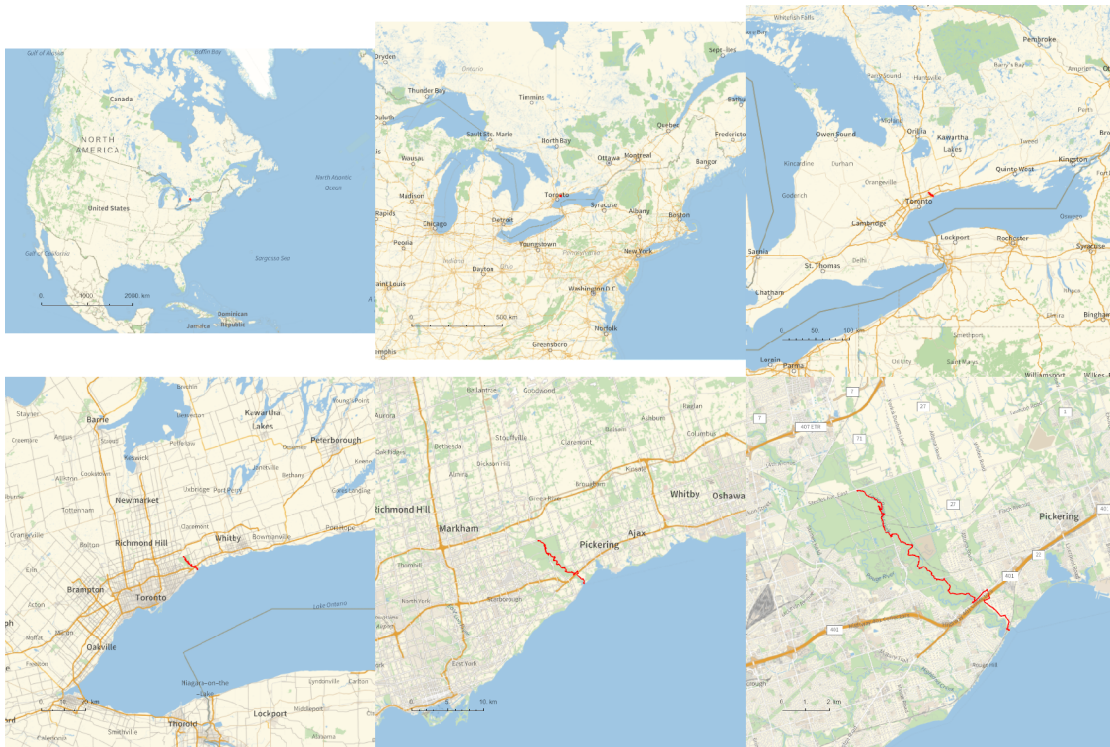
```
]
```

```
Export["PathLocation.png", PathLocation]
```

» {2023-04-22\_09-29\_Sat.gpx}



Out[ ]=



Out[ ]=

PathLocation.png

```
folder =  
  "C:\\drorbn\\AcademicPensieve\\Album\\2023.04.22_Rouge_River_Park_from_Steeles_to_the  
  _Lake";  
SetDirectory[folder];  
(Interpretation[ImageResize[Import@#, 400], #] → "") & /@  
FileNames["*.jpg" | "*.jpeg" | "*.png" | "*.mp4"]
```

A 15km hike on a rainy day, so at the end I was soaked. Yet water makes everything prettier! And less crowded!

```
{  
  "TitleNotes" →  
    "A 15km hike on a rainy day, so at the end I was soaked. Yet water makes  
    everything prettier! And less crowded!",  
  "ImageComments" → {}  
}
```