

```
In[*]:= Length[DeleteFile /@ FileNames["index.html", "C:\\drorbn\\AcademicPensieve\\Album", 2]]  
Out[*]=  
110
```

```

In[*]:= folder =
  "C:\\drorbn\\Album\\2021.11.11_Mishe_Mokwa_and_Backbone_Trails,_Santa_Monica_Mountains
  ";
SetDirectory[folder];

nbd = Select[FileNames["*", "C:\\drorbn\\Album"], FileType[#] == Directory &];
len = Length[nbd]
loc = Position[nbd, folder][[1, 1]];
DeleteFile[nbd[[Mod[#, len, 1]] <> "\\index.html"] & /@ (loc + {1, -1})];

fs = Echo@Take[FileNames[{"*.gpx", "*.kml"}], All];
data = Union@Table["Geometry" /. Import[f, "Data"], {f, fs}];
path = Echo@GeoGraphics[{Red, data},
  GeoGridRangePadding -> Scaled[0.1],
  GeoScaleBar -> "Kilometers"
];
Export["Path%.png", path]

path3D = Echo@ResourceFunction["GeoElevationGraphics3D"][{Red, data},
  GeoGridRangePadding -> 0,
  GeoScaleBar -> "Kilometers"
];
Export["Path3D%.png", path3D]

PathLocation = Module[{R = 3000, r = 10, n = 6, res = 600},
  ImageAssemble[
    Partition[#, 3] &@Table[
      Rasterize[
        GeoGraphics[{Red, Thick, data},
          GeoCenter -> Mean@Cases[data, GeoPosition[l_List] :-> Mean[l], ∞],
          GeoRange -> Quantity[R (r / R)(k-1)/(n-1), "Kilometers"],
          GeoScaleBar -> "Kilometers",
          ImageSize -> res
        ],
        RasterSize -> res
      ],
      {k, n}],
    "Fit", Background -> White]
  ]
Export["PathLocation.png", PathLocation]

ResetDirectory[]

```

Out[\*]=

278



**Union:** Heads List and GIS`DisjointBoxSets at positions 2 and 1 are expected to be the same.

**Union:** Heads List and GIS`DisjointBoxes at positions 2 and 1 are expected to be the same.

**General:** Further output of Union::heads will be suppressed during this calculation.

**Part:** The expression

`Union[GIS`DisjointBoxes[{{{ -1.29344 × 106, 395117.}, { -1.2934 × 106, 395151.}}, {{ -1.29355 × 106, 394980.}, { -1.29349 × 106, 395014.}}, {{ -1.2934 × 106, 395022.}, { -1.29334 × 106, 395056.}}, {{ -1.29326 × 106, 395093.}, { -1.29319 × 106, 395127.}}], Join[{}, $Failed, $Failed, $Failed]], {}]` cannot be used as a part specification.

**Part:** The expression

`Union[GIS`DisjointBoxes[{{{ -1.29344 × 106, 395117.}, { -1.2934 × 106, 395151.}}, {{ -1.29355 × 106, 394980.}, { -1.29349 × 106, 395014.}}, {{ -1.2934 × 106, 395022.}, { -1.29334 × 106, 395056.}}, {{ -1.29326 × 106, 395093.}, { -1.29319 × 106, 395127.}}], Join[{}, $Failed, $Failed, $Failed]], {}]` cannot be used as a part specification.

**Part:** The expression

`Union[GIS`DisjointBoxes[{{{ -1.29344 × 106, 395117.}, { -1.2934 × 106, 395151.}}, {{ -1.29355 × 106, 394980.}, { -1.29349 × 106, 395014.}}, {{ -1.2934 × 106, 395022.}, { -1.29334 × 106, 395056.}}, {{ -1.29326 × 106, 395093.}, { -1.29319 × 106, 395127.}}], Join[{}, $Failed, $Failed, $Failed]], {}]` cannot be used as a part specification.

**General:** Further output of Part::pkspec1 will be suppressed during this calculation.



Out[\*]=

Path%.png

**Union:** Heads List and GIS`DisjointBoxSets at positions 2 and 1 are expected to be the same.

**Extract:** Position specification `Union[<<1>>, {}]` in `Extract[{<<1>>, Union[GIS`DisjointBoxSets[{<<1>>], Join[{}, $Failed]], {}]}` is not applicable.

**Extract:** Position specification `Union[<<1>>, {}]` in `Extract[{<<1>>, Union[GIS`DisjointBoxSets[{<<1>>], Join[{}, $Failed]], {}]}` is not applicable.

**Extract:** Position specification `Union[<<1>>, {}]` in `Extract[{<<1>>, Union[GIS`DisjointBoxSets[{<<1>>], Join[{}, $Failed]], {}]}` is not applicable.

**General:** Further output of Extract::psl1 will be suppressed during this calculation.

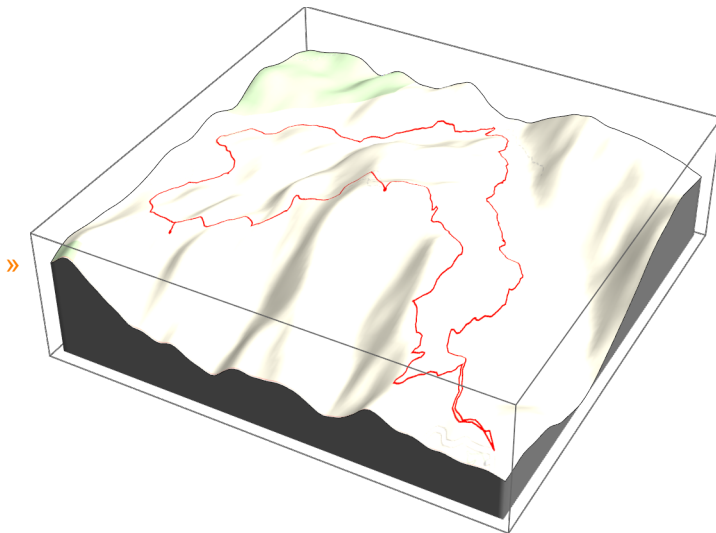
**Union:** Heads List and GIS`DisjointBoxes at positions 2 and 1 are expected to be the same.

**Part:** The expression  
`Union[GIS`DisjointBoxes[{{{-1.61679 × 106, 493901.}, {-1.61675 × 106, 493935.}}, {{-1.61675 × 106, 493781.}, {-1.61668 × 106, 493815.}}, {{-1.61656 × 106, 493871.}, {-1.6165 × 106, 493905.}}], Join[[], $Failed, $Failed]], {}]`  
 cannot be used as a part specification.

**Part:** The expression  
`Union[GIS`DisjointBoxes[{{{-1.61679 × 106, 493901.}, {-1.61675 × 106, 493935.}}, {{-1.61675 × 106, 493781.}, {-1.61668 × 106, 493815.}}, {{-1.61656 × 106, 493871.}, {-1.6165 × 106, 493905.}}], Join[[], $Failed, $Failed]], {}]`  
 cannot be used as a part specification.

**Part:** The expression  
`Union[GIS`DisjointBoxes[{{{-1.61679 × 106, 493901.}, {-1.61675 × 106, 493935.}}, {{-1.61675 × 106, 493781.}, {-1.61668 × 106, 493815.}}, {{-1.61656 × 106, 493871.}, {-1.6165 × 106, 493905.}}], Join[[], $Failed, $Failed]], {}]`  
 cannot be used as a part specification.

**General:** Further output of Part::pkspec1 will be suppressed during this calculation.



Out[ ]=

Path3D%.png

**Mean:** Rectangular array expected at position 1 in Mean[{-28.2706, {34.1178, -118.926, 0}, {34.1212, -118.935, 0}}].

**GeoGraphics:** Mean[{-28.2706, {34.1178, -118.926, 0}, {34.1212, -118.935, 0}}] is not a valid GeoCenter specification.

**Mean:** Rectangular array expected at position 1 in Mean[{-28.2706, {34.1178, -118.926, 0}, {34.1212, -118.935, 0}}].

**GeoGraphics:** Mean[{-28.2706, {34.1178, -118.926, 0}, {34.1212, -118.935, 0}}] is not a valid GeoCenter specification.

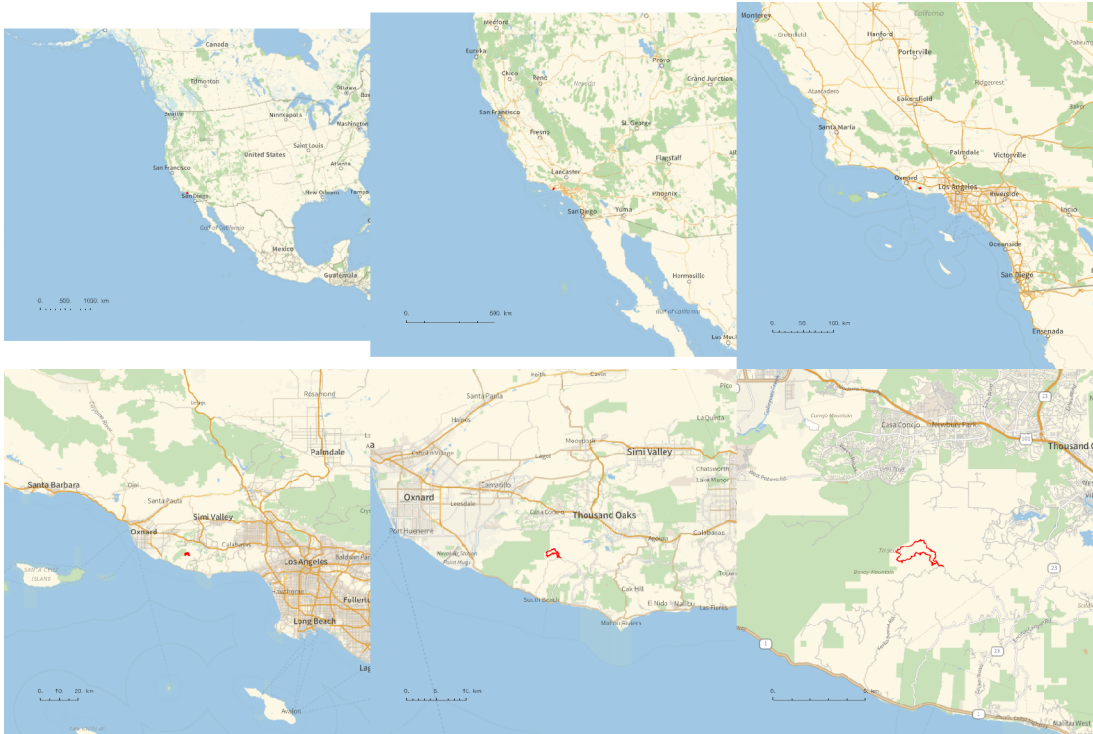
**Mean:** Rectangular array expected at position 1 in Mean[{-28.2706, {34.1178, -118.926, 0}, {34.1212, -118.935, 0}}].

**General:** Further output of Mean::rectt will be suppressed during this calculation.

**GeoGraphics:** Mean[{-28.2706, {34.1178, -118.926, 0}, {34.1212, -118.935, 0}}] is not a valid GeoCenter specification.

**General:** Further output of GeoGraphics::invgc will be suppressed during this calculation.

Out[ ]=



Out[ ]=

PathLocation.png

Out[ ]=

C:\Users\drorb\Documents

**SetDirectory[**

"C:\\drorbn\\AcademicPensieve\\Album\\2021.11.11\_Mishe\_Mokwa\_and\_Backbone\_Trails,\_  
\_Santa\_Monica\_Mountains"];

(Interpretation[ImageResize[Import@#, 400], #] → "") & /@  
FileNames["\*.jpg" | "\*.jpeg" | "\*.png" | "\*.mp4"]

```
{  
  "TitleNotes" → "With Itai, about 9.2km.",  
  "ImageComments" → {}  
}
```