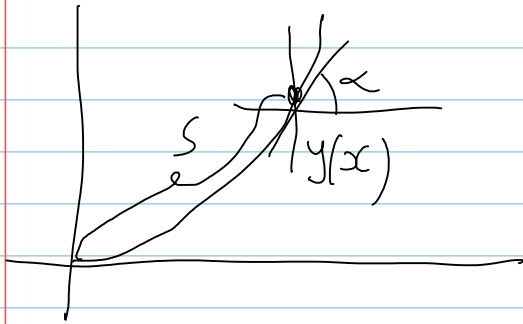


# The Tautochrone

Postponed until after  $F=ma$  and the harmonic oscillator

September-13-12  
11:51 AM

Talk about The Tautochrone — “the perfect pendulum”



$$\sin \alpha = -kS$$

$$\cos \alpha \alpha' = -k \frac{1}{\cos \alpha}$$

$$\dots \int$$