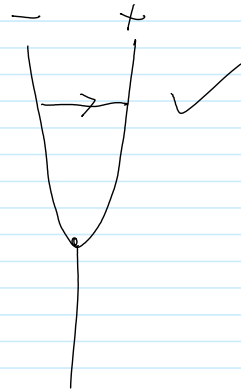


EK \leftrightarrow Naive conversions for abc

Wednesday, November 11, 2015 9:14 AM

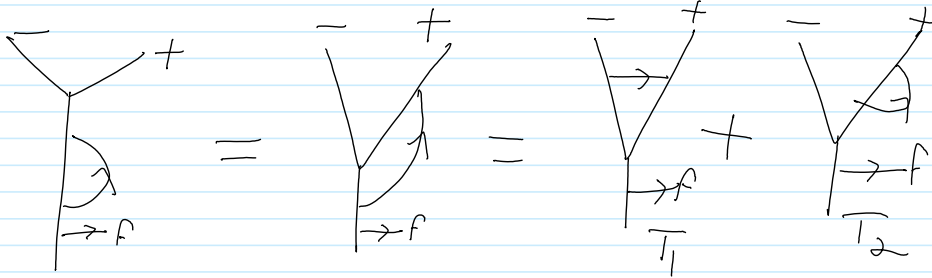
The relevant objects: a, da, ca, daa

Maybe the EK objects should have suffix 1: a_1, da_1, ca_1, daa_1 to indicate the vector vector? Maybe \perp !



So I need to implement $**\perp$ & MM2U

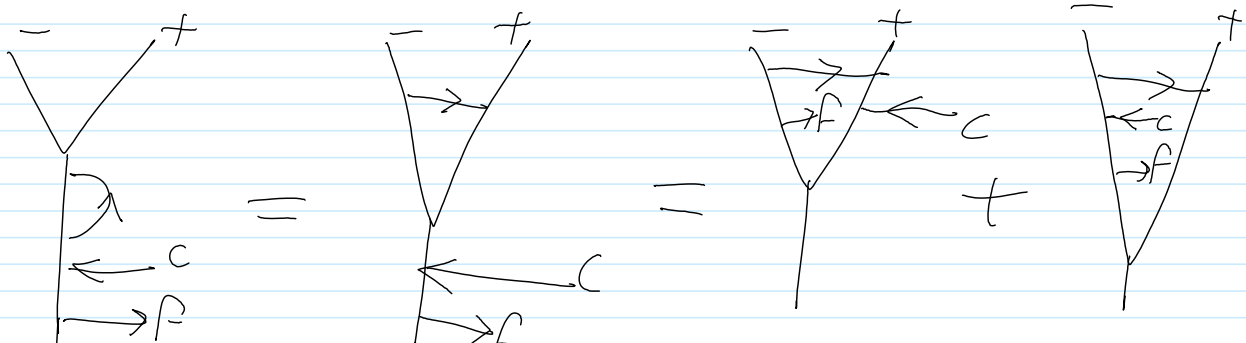
$Fa_{ij} // U2MM:$

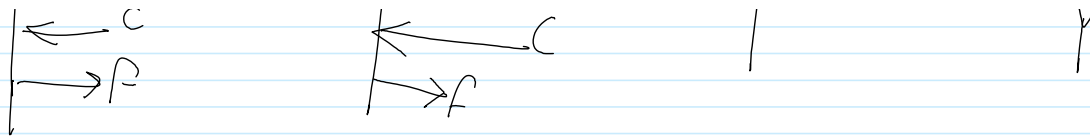


$T_1 = \text{[diagram]} = Fa_{jj} \perp - \partial_j f (fa_{jj} - b_j c_j) \perp$

$T_2 = \text{[diagram]} = fc_j \perp$ (there would be a b term here too, but it dies because of the Vermn vels)

$Fc_i a_{jk} // U2MM: i=j=k:$





$$= F \cdot \text{cal}(j, j, j) + \text{Diagram}$$

$i=j \neq k$:

