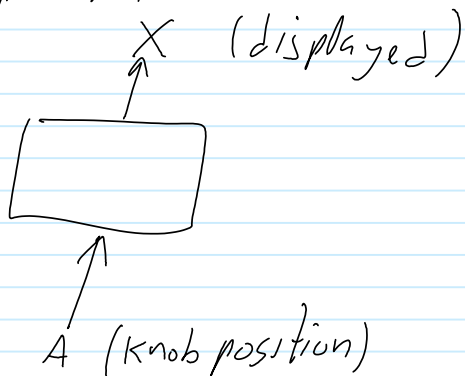


Experiments



$P_{X|A}(x|a)$ statistics.

Theory

Ψ - wave function in \mathcal{H}

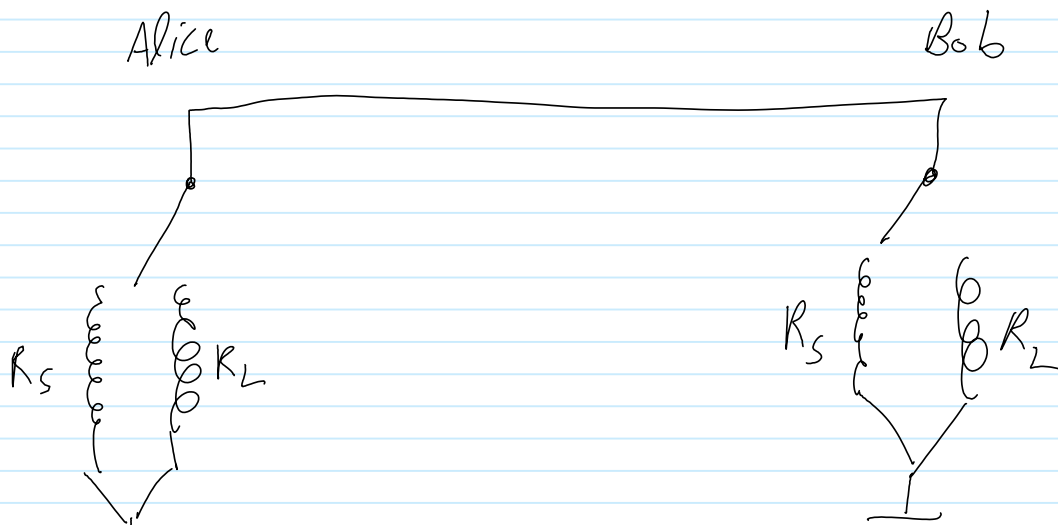
$\{\Pi^{x,a}\}$ measurement projectors.

$$\sum \Pi^{x,a} = id_{\mathcal{H}}$$

$$P_{X|A}(x|a) = \langle \Psi | \Pi^{x,a} | \Psi \rangle$$

"Claim": under reasonable hypotheses, all alternative theories are equivalent to QM.

Is the fact that I cannot follow math lectures equivalent to the fact that I cannot follow the lyrics of pop music as it is being played? Both are about not being able to synchronize my inner pace with an external one.





Measure fluctuations near Alice & Bob. They depend only on ^{total} resistance Fails.