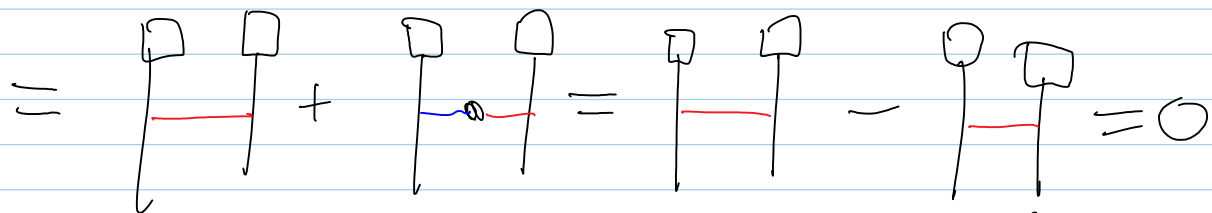
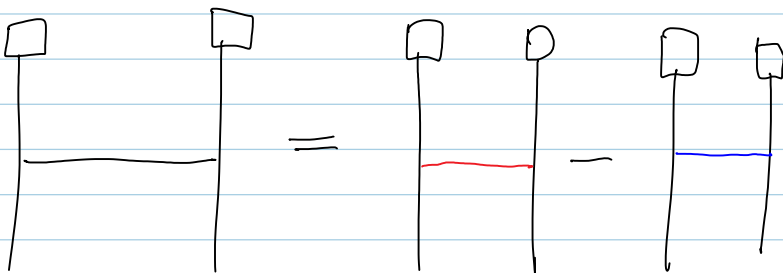
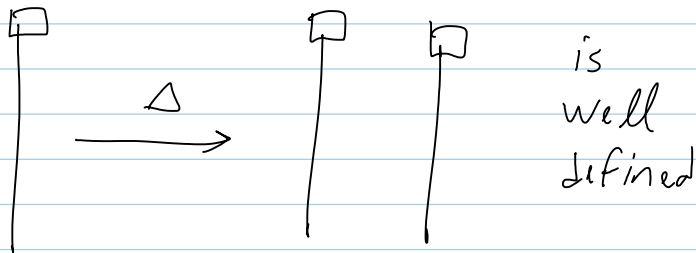
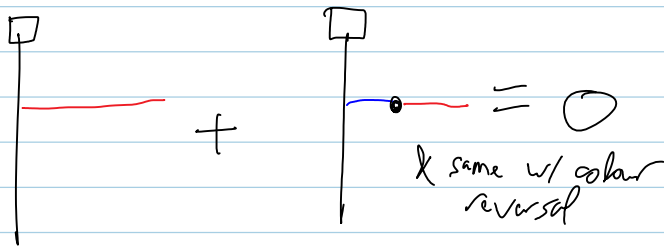


The "LiBland-Severa basic example" in diagrams

September-28-13
9:35 AM

Take I:



Does this necessarily kill non-horizontal chord diagrams?

Take II: The "group" is \mathbb{Z} , the "algebra" is $\mathbb{Z}\langle \square \rangle$. "t" is $H|| - ||H$.

is $\mathbb{1} = \mathbb{1}$. "t" is $\mathbb{H} - \mathbb{H}$.

$\mathbb{1} \xrightarrow{\text{null } \circ} \mathbb{1}$ $\mathbb{1}$ / t acts on A:

$$\mathbb{H} - \mathbb{H} = \circ !$$

Question - is $\mathbb{1}$ also an instance?
