

The PFFFFT phenomena - in the continuous category, knot may shrink & shrink & pfffft it's gone.

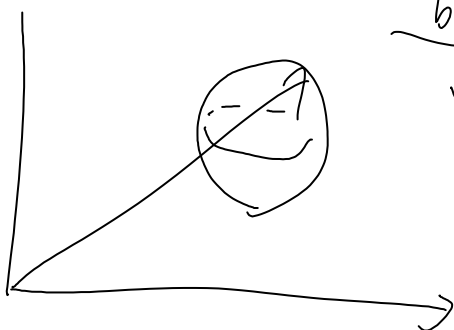
The Fundamental group of 4_1 :



$$G = \langle a, b \mid ABabaBABab = 1 \rangle \quad (A = a^{-1}, B = b^{-1})$$

There are 1701935 prime knots up to 16 crossings, only 32 of these aren't hyperbolic

In hyperbolic space, spheres that touch the bottom are Euclidean "horospheres" planes.



@: Why?